



Vacancy Pack

Teacher of Psychology

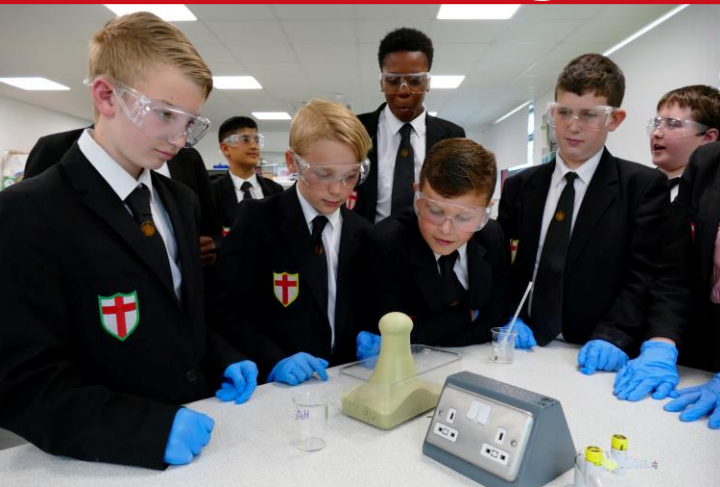
Main Pay Scale/Upper Pay Scale



Saint George's

Church of

England School





Our Vision
The Leadership Team
The Post
About You
The Package
The Application Process

AAAT vision

Aletheia schools are motivated by Christian values to serve our communities by improving the life chances of local children. Our schools seek to embody the Christian experience of community, where gifts are shared, where the emphasis is on what can be contributed and where each is given according to need. Aletheia schools welcome those of all faiths and none and are proud of the inclusive nature and diversity of each cohort. At the heart of the Aletheia vision are the belief in educational excellence and the belief that Aletheia is called to serve pupils, staff, parents and the local community by providing places where children and young people develop and thrive intellectually, socially, culturally and spiritually.

Aletheia is committed to sustaining and further improving high-quality schools and supporting schools in need of specific improvement. We seek to provide a range of support to schools that draws upon the wealth of practice from across our Trust, broaden the expertise available to schools through flexible working arrangements and retain the capacity to respond rapidly and effectively to the needs of individual schools. Pedagogical excellence is at the heart of all we do, with a sustained focus on collaborative and mastery learning. Our Teacher Training 'Hub' status aids our mission to recruit, train and retain staff of the highest quality within our local community.

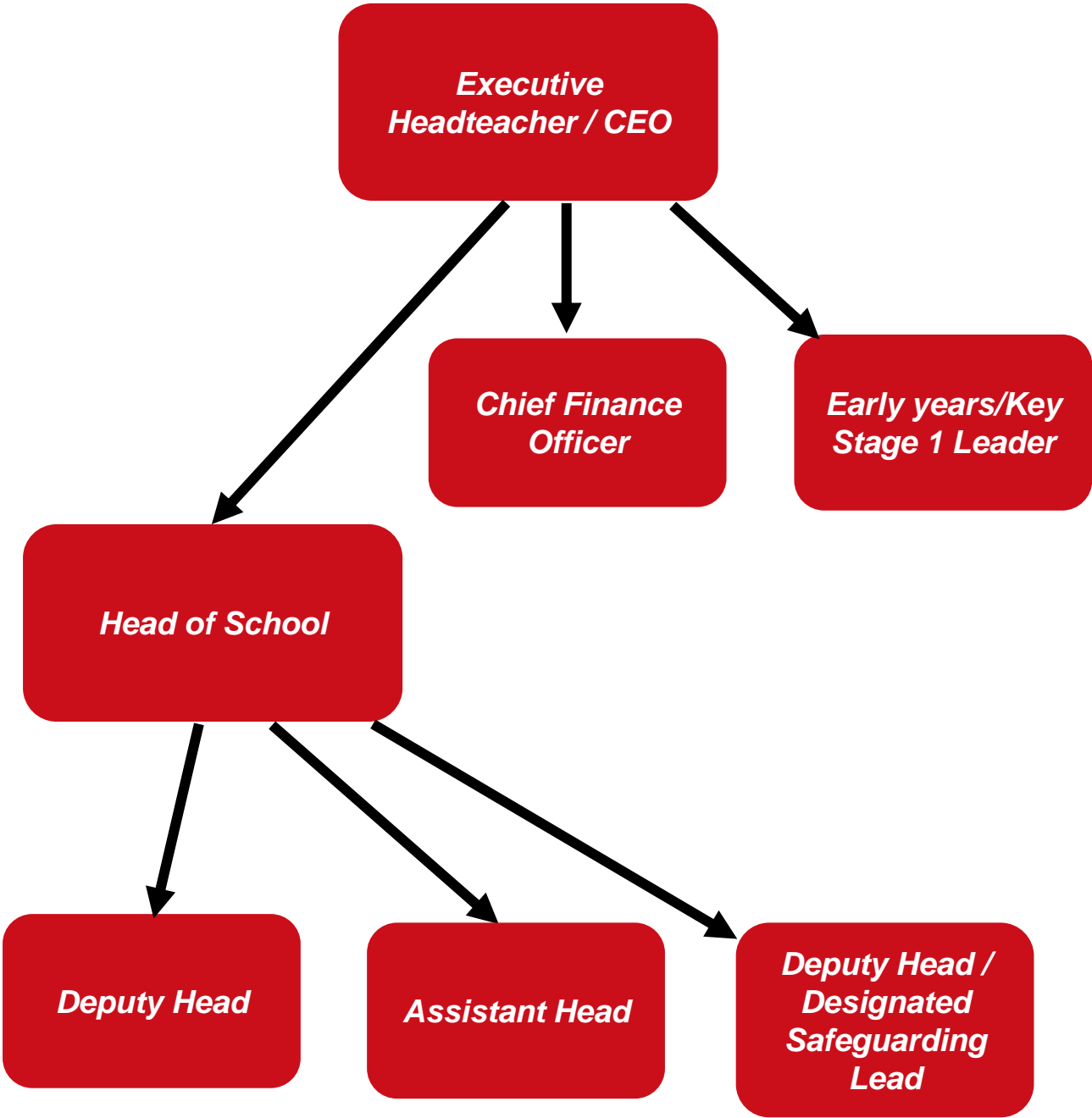
The Trust provides a coherent and logical geographical context for all constituent schools. Belonging to a local Trust offers greater opportunities for influence than single schools can achieve; through collaboration the Trust aims to be greater than the sum of its individual member schools. We believe that the success of Aletheia is fostered by the opportunities for schools, leaders and governors to step forward as co-shapers of a school-led and self-improving system. Designated as an approved academy sponsor, we offer our distinctive ethos, school improvement strategy and strength of leadership to ensure all schools are supporting students to achieve of their very best.

AAAT will deliver its vision by:

- **Developing a Trust for all ages /phases of education, with member schools working in partnership and learning from each other.**
- **Promoting a Church of England ethos based on a belief in the value and potential of every student to achieve excellence academically; in religious education and their wider studies and become fully the person God intends.**
- **Pursuing educational excellence, so that outcomes for all learners are as good as they can be.**
- **Creating strong leadership at all levels that impacts effectively on academy performance.**

All schools joining the Trust will have already established their support for and belief in these core principles.

Leadership Structure



Job Description

The Role

An exciting opportunity has arisen for a candidate of exceptional ability to join our humanities team as Teacher of Psychology (with sociology) in this over-subscribed and successful high school.

The school has an existing reputation for high quality education with a relentless focus upon high expectations and aspirations.

We are a friendly, dynamic and innovative school and pride ourselves on our commitment to ensuring student progress through high quality teaching and learning provision for all. The successful applicant will share these values and play an active part in delivering on this commitment.

Principle Responsibilities

- Prepare and teach lessons of a high standard to the students assigned to him/her:
 - following designated programmes of study
 - carrying out the necessary assessments
 - providing information/comments for records
 - monitoring students in accordance with agreed departmental strategies
- Maintain discipline in accordance with school policies and demonstrate good practice in the classes taught with regard to attendance, appearance, uniform, punctuality, behaviour, homework etc.
- Contribute to the corporate tasks of development, record keeping, monitoring, and evaluation of lessons and maintenance of materials
- Participate in the applications of the departmental homework policy which includes setting, marking of homework and monitoring homework diaries
- Work closely with and consult those teachers who are responsible for similar curriculum areas, ensuring continuity and progression for students
- Engage in continuous professional self-development in relevant areas

Person Specification:

Person Specification

Classroom teachers should demonstrate their knowledge and understanding of:

- Principles and practices of effective teaching and learning
 - Preparation of schemes of work and lessons
 - Knowledge and understanding of subject area(s)
 - Principles and practices of monitoring/assessment/evaluation
 - The application of information and communications technology (ICT) to learning and teaching in subject area(s)
-
- The ability to command respect from others
 - Ability to initiate and manage change
 - Ability to build and sustain effective working relationships with a range of stakeholders and external partners
 - Ability to demonstrate enthusiasm and sensitivity while working with others
 - Ability to make considered decisions
 - Be creative, flexible, and innovative
 - Promote a well-reasoned educational philosophy in relation to the school ethos
 - Be encouraging and supportive in the development of others
 - Be emotionally self-aware
 - Have high personal aspirations and inspire the same in all members of the school community
 - Demonstrate a high level of integrity, honesty and fairness
 - Readiness to reflect on, evaluate and improve practice and to hold self and others to account
 - Humour, warmth and energy

The package:

Salary: Main Pay Scale/Upper Pay Scale - Full time

The Application process:

Please download an application form below. Your application should be returned by e-mail to batcheldore@sgsce.co.uk

Elise Batcheldor
HR & Administration Officer
Saint George's CE School
Meadow Road
Gravesend
Kent
DA11 7LS

Dates:

Closing date: Monday 25th January 2021 at 12 noon.

Interview date: To be confirmed.

Saint George's School is committed to safeguarding and promoting the welfare of children and expects all staff to share this commitment. The appointment is subject to satisfactory references, medical clearance and an enhanced DBS check.

