

Person specification –Teacher of PE:

Overview

St Michael's School is committed to safeguarding and promoting the welfare of children and young people and expects all staff and volunteers to share this commitment.

We are looking for someone who has a warm and encouraging manner that will bring out the best in others. They will be reliable, organised, and efficient and a good team player. They should be flexible and ambitious, displaying drive and determination. They should be passionate about teaching, inspiring children, sport and exercise and committed to providing excellent lessons for children that are motivating and inspiring.

Essential Qualifications:

- Experience of working with and planning PE/games lesson for children in Key stages 1,2 and 3.
- Experience of working with children with a range of emotional and behavioural difficulties.
- An enhanced disclosure via the DBS and registration for the update service.
- Eligible to work in the UK.
- QTS

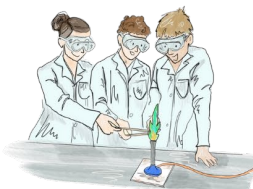
Desirable Qualifications:

- Level 2 coaching qualifications
- First Aid qualification (training is provided)
- D1 Minibus driver (training is provided)
- Safeguarding qualification (training is provided)

Essential Experience:

- Experience of working with children in Key stages 1,2 and 3 as a qualified teacher.
- Previous experience at working in a school.
- Understanding of Keeping Children Safe in Education (KCSiE) and safeguarding in schools
-

Head: Nik Pears BEd (Hons) Cantab
St Michael's School Trust
Registered Charity No. 1076999



St Michael's Prep School
Otford Court, Row Dow
Otford, Kent, TN14 5RY

01959 522137

office@stmichaels.kent.sch.uk
www.stmichaels.kent.sch.uk

Personal Attributes:

- A passion for developing young lives.
- The ability to form and maintain suitable relationships and personal boundaries with children and young people.
- Strength as a team player with the ability to build a strong team ethos.
- Ability to act as an ambassador and professional advocate for the school.
- Strong personal credibility and the capacity to build relationships.
- Resilience and capacity to cope under pressure.
- Sympathy with the Christian ethos and values of the school.

St Michael's Prep School is committed to safeguarding and promoting the welfare of children and the successful applicant will be subject to an enhanced disclosure through the Disclosure and Barring Service and online digital presence checks if invited to interview.