

## Job Description – Teacher of PE

### Purpose of job:

To provide an inclusive and varied sports provision across a variety of ages, offering guidance, encouragement and motivation at team and individual levels. Working as part of the wider PE and Games team, contributing to curriculum activities and sporting fixtures.

To inspire children to love learning and promote the best academic, social, moral, physical, spiritual and emotional development of each child in a safe, caring and stimulating environment of the school. Delivering age/ability appropriate, fun, and progressive games, and academic lessons to children aged 8-13 years.

### Line Manager:

The Director of Sport

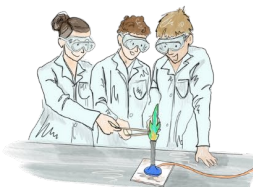
### Responsible to:

- The Head
- The Governing Body
- The Deputy Heads
- Heads of Boys and Girls Games

### Other key relationships:

- Parents
- Pupils
- Colleagues
- Professional Sporting Associations

Head: Nik Pears BEd (Hons) Cantab  
St Michael's School Trust  
Registered Charity No. 1076999



St Michael's Prep School  
Otford Court, Row Dow  
Otford, Kent, TN14 5RY

01959 522137

office@stmichaels.kent.sch.uk  
www.stmichaels.kent.sch.uk

## **Key responsibilities:**

### **Teaching & Learning**

- Collaborate with colleagues within the PE team in the planning and delivery of high quality, differentiated learning for all children. Liaise with 'additional needs' support as necessary, and undertake routine assessments and keeping appropriate records of progress
- Promote sport to all pupils and encourage them to progress and develop a love of sport and activity for life.
- Undertake administrative duties, as and when required, including taking group registers, updating team selection, fixtures, and results on SOCS. Write termly pupil reports and enter grades for specific sports.
- Attend all relevant training as required within the job role of a Games teacher/coach.
- Use experience to support all pupils' learning and support the promotion of positive behaviour.
- Consult with learning support in respect of differentiation for the needs of children with additional needs, as necessary.
- Attend all relevant training as required within the job role and support equal opportunities for all children and staff.
- Ensure all pupils are provided with a suitable level of teaching and prepare effective and progressive lessons throughout each term and undertake routine assessments to understand pupil progress which informs planning and reporting.
- Support equal opportunities for all children and staff. The planning and delivery of high-quality differentiated learning for all children across curriculum subjects.
- Always meet and uphold the professional teachers' standards.

### **Communication**

- To promote children's independence and self-esteem through enabling their success. To treat children, always, in a manner consistent with specific school policies and the broader ethos of the school.
- Work effectively as part of the St Michael's Team to ensure the seamless delivery of teaching and communication.
- Communicate with parents regarding fixtures, tournaments, pupil concerns.
- Communicate with parents through formal and informal parents' meetings and other meetings as necessary for advice, information and to promote learning.

### **Teamwork**

- To participate in all necessary duty and cover rotas within and around the school.
- To work as part of the wider staff body as an effective team member, attending meetings and liaising with colleagues to contribute to a high level of well-being across the school.

- To support school policies, procedures and development plans as defined by the Senior Leadership Team and Governing Body.
- To participate in 'in-service' training as part of career and curriculum development, in line with school needs.
- Be in school during the hours as are necessary to effectively discharge all professional duties.
- To maintain an appropriate and professional standard of personal appearance.
- To have respect for the confidential nature of the post.

## Health and Safety

- To safeguard and promote the welfare of all children.
- Be responsible for the well-being of participants throughout the duration of the school day, making sure those participating are aware of rules and safety requirements and abide by such rules.
- Log incidents/accidents in line with the school's Health and Safety policy
- Maintain a safe environment where children feel able to share safeguarding concerns.
- To have regard for the health and safety of all children, staff, parents, and visitors to the school.
- Have regard to the health and safety of all children, staff, parents and visitors to the school.

The postholder may be required to perform duties other than those given in this job description for the post. The duties and responsibilities attached to the post may vary from time to time without changing the general character of the duties or the level of responsibilities entailed.

