



Saint George's
Church of England School

WORKING AT SAINT GEORGE'S C OF E SCHOOL

Join our Team



**For Appointment of:
Midday Meals Supervisor/Play Leader**





Welcome from Executive Headteacher

Simon Murphy

Thank you for your interest in this role at Saint George's Church of England School. I hope the information within gives you an insight into our all-through school and the unique opportunity this position offers.

As a founding member of the Aletheia Academies Trust, our vision is rooted in a determination to improve the life chances of local children. The Trust provides outstanding opportunities for our primary and secondary based staff to connect with others, share good practice, improve their teaching, and develop their own career pathway.

Saint George's is thriving. All stakeholders including governors, parents, staff and pupils work exceptionally hard to create a warm, welcoming and inclusive atmosphere in a school which boasts a fantastic sense of community, continuously improves outcomes for children and families, and holds tightly to its Christian vision and values.

As an all-through school, that sense of community is all the more palpable and I feel very privileged, alongside my colleagues, to see pupils learn and develop from reception classes through to our excellent 6th Form provision.

We look forward to receiving your application and welcoming you to Saint George's.



Welcome from Head of Primary Phase

Helen Taylor

Our children are at the heart of everything we do here at Saint George's. Through the delivery of our curriculum, we aspire for all of our children to be challenged, and develop into independent, successful, safe, and happy learners, ready to tackle the next stage of their education with hope and confidence. At Saint George's we have a unique opportunity to teach and develop children from the age of four to eighteen in a safe and caring environment that puts the individual first. We have high aspirations and expectations for all staff and pupils and strive for high quality teaching and provision for all.

As an all-through school, we also have access to the huge range of expertise and facilities on offer at the secondary phase, such as specialist subject colleagues teaching in the primary phase, playing fields, a library, science laboratories, a multi-use games pitch and music resources. Outdoor Learning is hugely important for our school and Forest School forms a large part of our Curriculum. We believe children learn best when they are active and motivated in and by everything the outdoor environment has to offer.

From the moment children join Saint George's Primary Phase they become part of our dedicated and successful community where we value each individual and nurture their special talents.

I look forward to receiving your application.

All Different • All Equal • All Flourishing



Saint George's Church of England All Through School



We consider our school to be highly inclusive, welcoming students of all backgrounds and beliefs, unified by our commitment to their well-being and sense of achievement.

Saint George's has developed a reputation as a high achieving school providing excellent outcomes for all students academically and in terms of their personal growth. We have exceptionally high expectations of how our students behave, speak, and present themselves. This is underpinned by our Christian values, our worship and school ethos. Everyone who wishes to learn is welcome.

Our motto **'All Different, All Equal, All Flourishing'** emphasises our Christian belief that the God-given talents of all students should be encouraged and developed, recognising, and valuing their unique worth.

We have had a long-held belief in the potential of an all-through school to further enhance the educational provision on our site. We are delighted that this vision has now become a reality for Saint George's. A shared philosophy ensures that there is greater consistency around expectations, ethos and pedagogy which eliminates any unsettling transition between the primary and secondary phases. We facilitate teachers working together in the primary and secondary phases which raises aspirations still further and ensures that children are not able to fall through the gaps. Our primary pupils benefit from having specialist subject staff available and economies of scale allow greater spending on teaching and learning and the sharing of specialist and enhanced facilities for all pupils.

At Saint George's, we strive for all students to have learnt new skills, to have developed their talents and with this, a love of learning; making them confident, articulate, sensitive and caring citizens for the future.



"Visitors most often comment upon the profound sense of community within the school."



Diocese of
Rochester

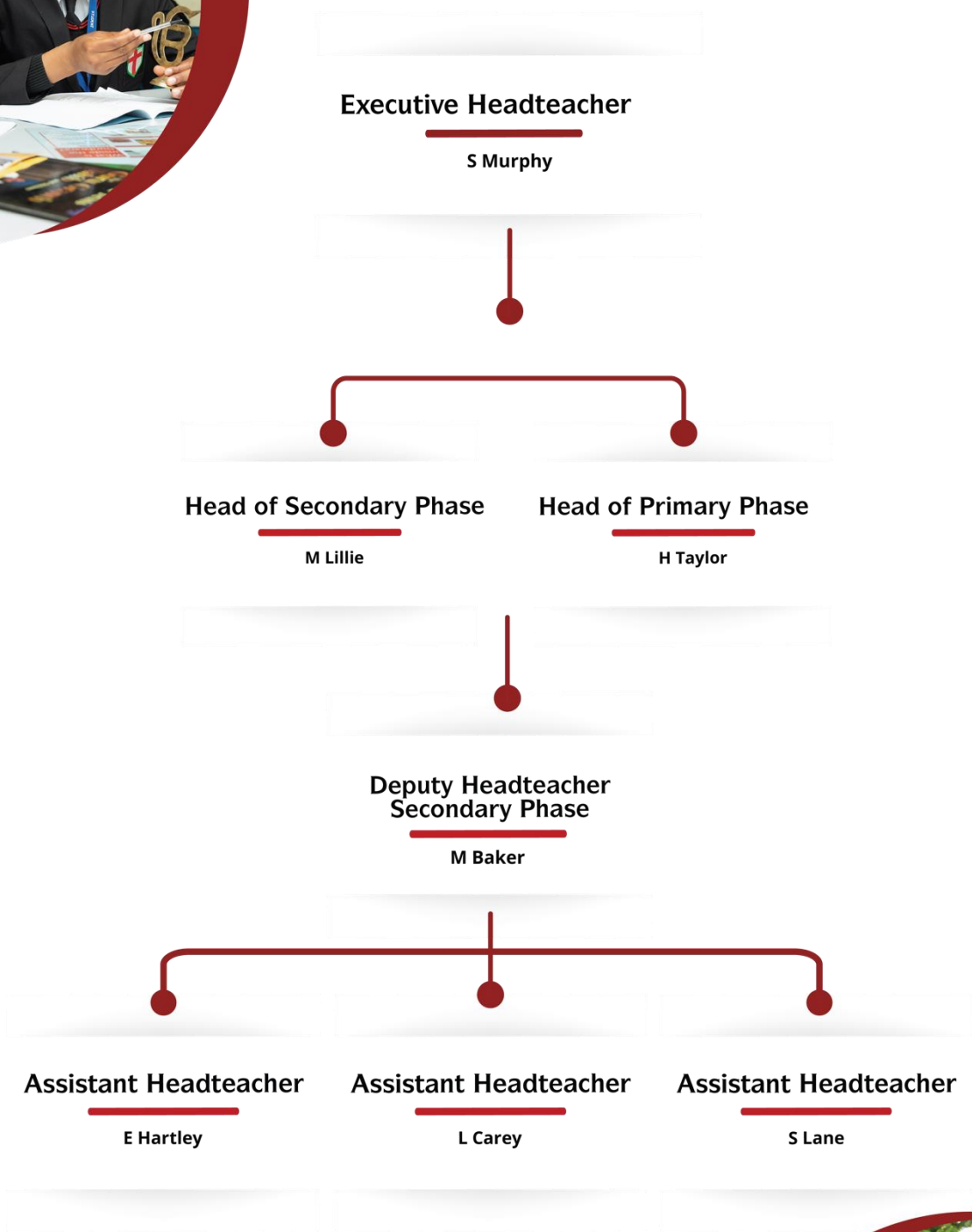
SIAMS INSPECTION 2019



EXCELLENT

Ofsted
Good
Provider

School Structure



Job Description

Job Title	Midday Meals Supervisor – Primary Phase
Location	Gravesend
Duration	Permanent
Work Hours	Part-time, term time plus development days
Reporting to	Head of Primary Phase
Salary	AAT A - £5,749.09 per annum (£24,513 FTE)
Pension	LGPS



About the Role

We are looking to appoint a Midday Meals Supervisor to join our team within the Primary Phase of Saint George's Church of England School to support with providing a high-quality lunch time experience for our children. We are a small, friendly team, working closely together and we will make you very welcome.

We would love to hear from you if you:

- ♥ Enjoy working and playing with children
- ♥ Are committed to enabling every child to achieve the very best they can
- ♥ Have a belief in inclusion, diversity and the right of each child to be successful whatever their needs, abilities and background

To be successful in this post, you will need:

- ♥ To be positive, enthusiastic and highly organised
- ♥ Have high expectations of both children and yourself
- ♥ Have good strategies for managing children, ensuring they are involved and engaged
- ♥ To be able to inspire, motivate and foster excellent relationships, working in partnership with staff, parents, governors and our wider community
- ♥ Good interpersonal skills, a sense of humour and the ability to work as part of a hard-working, enthusiastic and committed team
- ♥ To be committed to your own professional development and keen to make a significant contribution to the life of our school.
- ♥ Previous experience of working with children in a primary school would be desirable but not essential

Key Responsibilities



Job Purpose

- ♥ To supervise and care for children during the lunch break, ensuring their safety and welfare and helping them to develop good eating habits.
- ♥ To work as part of a team to ensure consistency and effectiveness, contributing to the positive ethos and environment of the school.
- ♥ To follow the school's behaviour policy in encouraging good behaviour and addressing any poor behaviour.
- ♥ To play games with the children, initiating and supervising activities.
- ♥ To undertake any additional activities that have been put in place and requested by Deputy Headteacher.
- ♥ To adhere to the need for confidentiality at all times.

Lunch Hall Duties

- ♥ To assist with setting up tables, laying up places (knives and forks) and pouring drinks. To assist with clearing away after meals, wiping tables and putting tables away.
- ♥ To follow the established procedures in directing children to collect food and return trays, cutlery and cups.
- ♥ To clean up food and water spillages on tables and floors.
- ♥ To help children with skills such as cutting food, using cutlery correctly and eating properly and to also develop children's skills in social interaction.
- ♥ To help children with lunchboxes to manage their food i.e. opening crisp packets, drinks, etc.
- ♥ To inform class teachers if packed lunch boxes contain items that are not part of the school's policy i.e. fizzy drinks.
- ♥ To clean tables, sweep the floor after lunch and put tables away





Playground Duties

- ♥ To help children develop good social skills; playing games, taking turns and caring for one another.
 - ♥ To be actively involved in the children's play; leading and organising games and activities.
 - ♥ To escort children to and from the toilets, ensuring they are not left unsupervised in school.
 - ♥ To ensure children are playing safely.
 - ♥ To deal with First Aid matters or to report them to a First Aider.
- To lead children back into class, ensuring children are sensible and calm, ready for their afternoon learning.



Person Specification



Essential Skills and Experience

- ♥ Be able to work effectively as part of a team.
- ♥ Be able to work independently and on own initiative.
- ♥ Commitment to safeguarding pupil's wellbeing and equality
- ♥ Commitment to maintaining confidentiality at all times
- ♥ Be able to work calmly under pressure with the ability to adapt quickly and effectively to changing circumstance/situations.
- ♥ A positive, can-do attitude and a good sense of humour

How to Apply



If you are interested in this position and would like to have a more detailed conversation or arrange a visit to the school before making the decision to apply for the post, please contact:

The People and Culture Team

HR@aletheiaitrust.org.uk

01474 533 082

To apply for this role, please visit MyNewTerm:

[Online Application Form](#)



Aletheia Academies Trust is committed to safeguarding and promoting the welfare of children and young people and expects all staff, volunteers, and governors to share this commitment. All successful candidates will be subject to an enhanced DBS check along with other relevant employment checks, including overseas criminal background checks where applicable. Our policy statement on the recruitment of ex-offenders can be found on our website. All new employees, volunteers and governors will be required to undertake safeguarding training on induction which will be regularly updated in line with statutory guidance.

Please click here to view: [Our Trust policies](#) or [Our recruitment of Ex-Offenders policy](#).



Contact Us

Saint George's C of E School

Meadow Road,
Gravesend,
DA11 7LS

Unique Reference Number:

137609

Telephone:

01474 533 082

Website:

saintgeorgescofe.kent.sch.uk

Email:

HR@aletheiaacademies.org.uk