



**Gravesend**  
Grammar School

Working at Gravesend Grammar School

# Join our Team

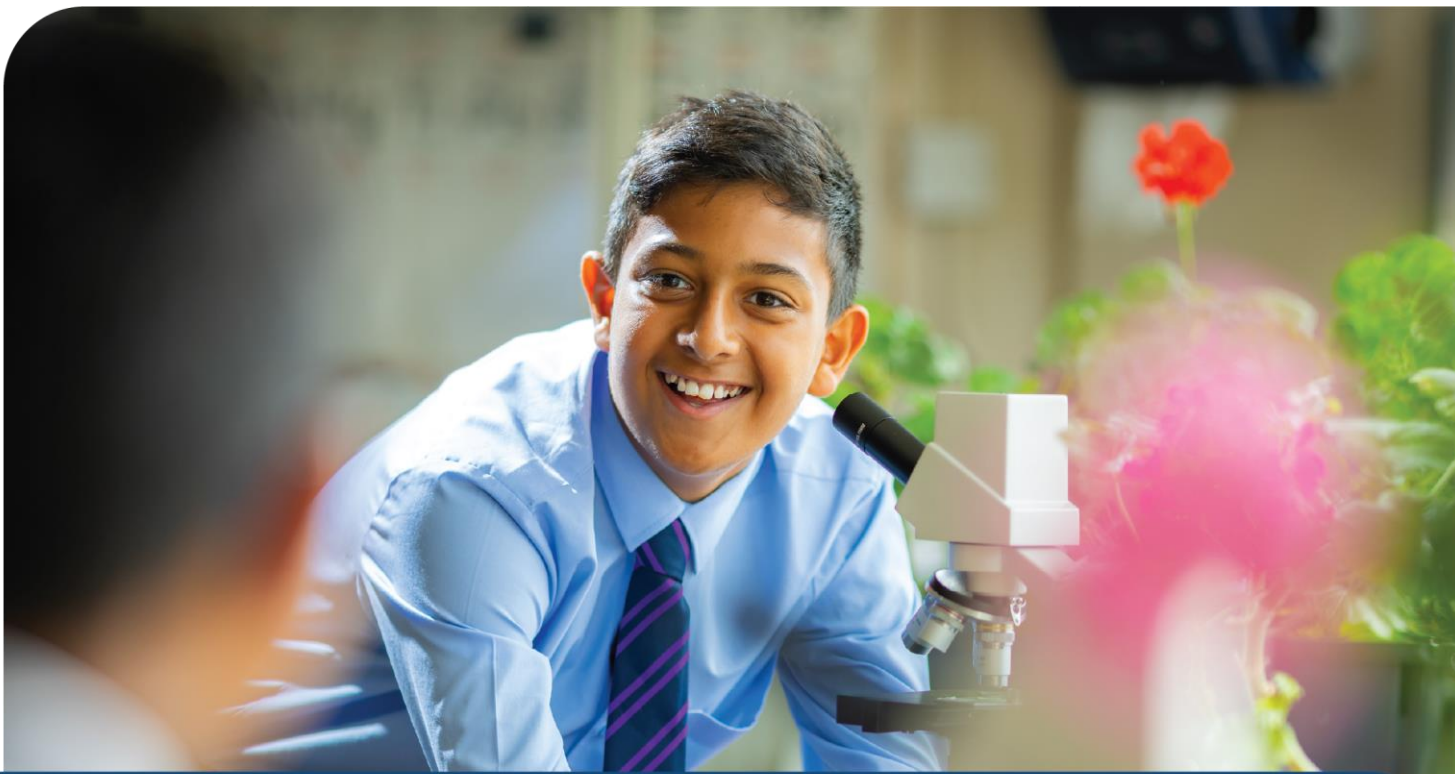


**For appointment of:**  
**Sports Coach & Cover Supervisor**



PROUD TO BE  
**Aletheia**  
Academies Trust





## Headteacher Welcome

Mr Malcolm Moaby

Thank you for your interest in the role at Gravesend Grammar School. I hope that what you read will encourage you to apply to be part of our team.

I am incredibly proud to be the Headteacher of Gravesend Grammar School. Having spent many years here as both a teacher and a leader, I am deeply committed to ensuring that our traditional values are preserved in a modern context.

While academic excellence is at the core of our mission, I believe that a rich and diverse curriculum is equally important in fostering well-rounded individuals. This balance enables our students to confidently navigate the next phase of their lives, complementing the demands of a rigorous academic program.

Our goal is clear: we strive to help every student progress and achieve success in life, while offering opportunities for teachers and support staff to excel and grow within their roles.

As a selective school we are fortunate to be educating students who have high aspirations and have a strong commitment and loyalty to the School. In return, we provide a high quality learning environment with opportunities and challenges for all of our students both within and beyond the curriculum.

We offer a positive learning atmosphere, a network of supportive colleagues, and a comprehensive professional development program.

I look forward to receiving your application.

**Consule Cunctis - take thought for everyone**



# About Gravesend Grammar School



Gravesend Grammar School, established in 1893, is a prestigious and highly respected institution with a long-standing tradition of academic excellence. Situated in Gravesend, Kent, the school has consistently delivered exceptional education to generations of students, fostering a learning environment that is both challenging and supportive. With a focus on both academic achievement and personal development, Gravesend Grammar School offers a broad and balanced curriculum, enriched by a wide range of extracurricular activities that allow students to explore their passions and talents. The school's dedicated and highly skilled staff are committed to providing high-quality teaching, nurturing each student's potential, and ensuring that they are well-prepared for future success.

Our vision is to provide students with challenges and opportunities that will equip them with the qualifications, skills, and personal attributes necessary for success in later life. We offer an ambitious and rigorous curriculum that fosters high academic aspirations for all students. Our expert teachers design engaging lessons that develop both subject knowledge and essential skills, empowering students to reach their full potential as they progress through their education.

Beyond academics, we aim to provide a wealth of opportunities that encourage students to explore their interests, build confidence, and foster a strong sense of community and belonging. Our extensive extracurricular programme is an essential part of this, and we value and recognize hard work and effort both within and beyond the classroom. The Parthenon and Milton Award schemes celebrate students' dedication and achievements, highlighting their growth and contributions to the school.

At the heart of our school is a commitment to the well-being and pastoral support of every student. We strive to build positive, supportive relationships where students feel safe, happy, and respected. Our aim is to create an environment where all students can thrive, seek guidance when needed, and feel valued as members of our community.

At Gravesend Grammar School, we prioritise the well-being and pastoral support of every student. We build positive, respectful relationships, ensuring that students feel safe, happy, and supported in an environment where they can thrive. Our school motto, *Consule Cunctis* – "take thought for everyone" – reflects our commitment to mutual respect and courtesy. The school's core values, or Pillars of Success, guide our efforts to help each student become the best version of themselves, preparing them for success in both their academic and personal lives.



"Pupils are highly respectful of each other, courteous and polite. Relationships between staff and pupils are exceptionally positive, which leads to very strong attitudes to learning. This is reflected in their excellent attendance". **Ofsted 2025**



# Staff Benefits



We value every one of our employees and want to give back as much as possible. To show our appreciation, we offer a range of perks and benefits as outlined below:



Trust-wide commitment to your ongoing Continuous Professional Development (CPD) including secondment opportunities.



Unlimited access for you and your family to 24/7 GP telephone consultations.



Enhanced annual leave allowance with term-time offerings.



Access to a wide array of discounts including Motorfinity, Kent Rewards and Blue Light Card.



Access to mental health and wellbeing support including counselling, mindfulness and physiotherapy sessions.



Access to Local Government and Teachers' Pensions Schemes.



Free eye test, examinations and eye care vouchers.

For a full range of what Aletheia Academies Trust offer, please scan:



# Job Description

Job Title	Sports Coach & Cover Supervisor
Location	Gravesend
Duration	Permanent
Work Hours	34.5 hrs per week, TTO
Reporting to	Director of Sports
Salary	AAT E, Actual £21,958 per annum (£27,852 FTE)
Pension	LGPS
Start date	TBC



## About the Role

Gravesend Grammar School (GGS) has an extensive extra curricular sports programme and is looking for a talented and committed sports coach. We are particularly interested in hearing from Rugby, Basketball, Hockey, Netball, Football and Cricket coaches. The role will also include work as a Cover Supervisor, to stand in for the teacher if they are absent across all subjects. They will be required to instruct the students to appropriate set work and support their learning in a calm working environment. It is very important that the successful candidate is confident in working with young people and that they are able to create sustainable relationships.

The successful candidate needs to be highly motivated to develop as a sports coach. This role would particularly suit someone who has aspirations to coach in professional or national environments in the future. Whilst qualifications are desirable a commitment to the sport, experience and enthusiasm are essential. They must be able to;

- Organise, coach and officiate fixtures and competitions both internally and externally
- Motivate young people to take part in sport
- Develop students so that they can access school, regional, national and international competition
- Aspire to lead a sport to national success
- Drive a school minibus (hold a clean UK driving licence)

Cover supervision has different demands over the course of the year and the successful candidate needs to be flexible and fit their sports coaching preparation around this commitment.

# Person Specification



## Qualifications and Experience

Successful experience of involvement in Rugby, Basketball, Hockey, Netball, Football or Cricket as a team player	X	
Experience in competitive Rugby, Basketball, Hockey, Netball, Football or Cricket at club level	X	
Experience of coaching Rugby, Basketball, Hockey, Netball, Football or Cricket to a high standard and level	X	
Experience working in at least one other school or college		X
A good standard of general education/ relevant vocational qualifications preferred. Sports Coaching Certificates	X	
A clean UK driving licence and the ability to complete MIDAS training	X	
A qualification in Health or Sports Science at Diploma or Degree level PE coaching qualifications		X
First Aid qualification D1 Drivers Licence		X

## Skills and Knowledge

Excellent PE coaching skills	X	
Excellent inter-personal and communication skills	X	
A good understanding of sports leadership skills		X
A good knowledge of health and safety matters related to sport		X
A good knowledge of first aid		X
A clear understanding of the range of sports available in schools, the competition rules relating to them and technical training methods		X

## Personal Qualities

- Ability to work effectively under pressure and maintain an optimistic and positive attitude.
- Able to maintain personal drive and energy.
- Ability to relate well to people at all levels.
- An aptitude to work as part of a team whilst also being self-motivated and action oriented.
- A high level of personal organisation skills.
- An ability to manage your own personal stress levels. A commitment to provide a quality support to the pupils and parents of Gravesend Grammar School.
- Personal integrity, dedication and commitment to the school
- Willingness to work irregular hours on occasions.

All Essential Criteria

E = Essential

D = Desirable

# How to Apply



If you are excited by this role and believe you have the values, vision, and expertise to lead our school through this exciting period of development, then we would love to hear from you.

**Jo Barker-Platt, Director of People and Culture**  
[HR@aletheiatruster.org.uk](mailto:HR@aletheiatruster.org.uk)  
01474 533 082.

**To apply for this role, please visit MyNewTerm**

## **School Visit Date:**

w/c

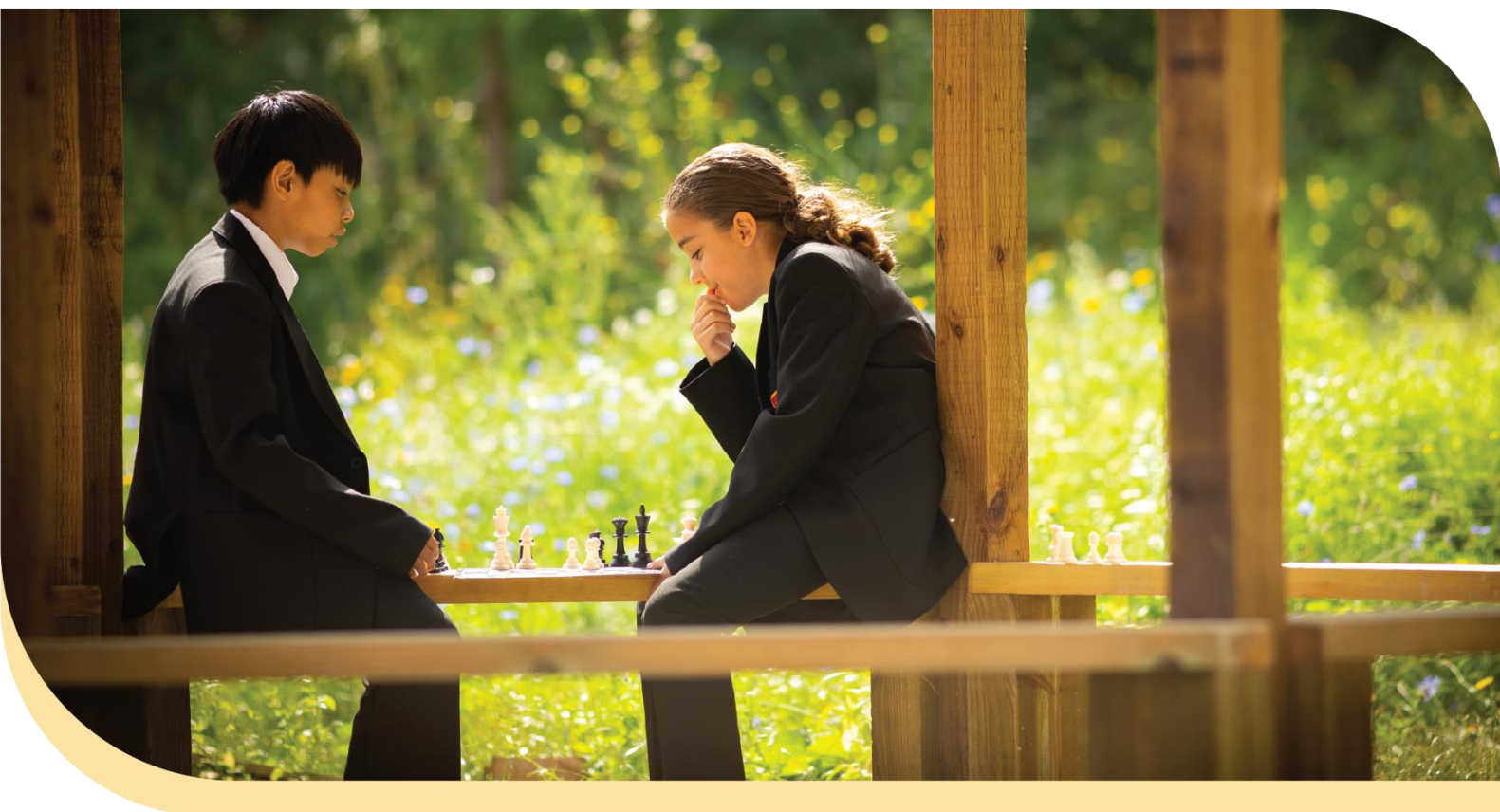
02/06/2025

## **Closing Date:**

21/05/2025

## **Interview Date(s):**

w/c 02/06/2025



Aletheia Academies Trust is committed to safeguarding and promoting the welfare of children and young people and expects all staff, volunteers and governors to share this commitment. All successful candidates will be subject to an enhanced DBS check along with other relevant employment checks, including overseas criminal background checks where applicable. Our policy statement on the recruitment of ex offenders can be found on our website. All new employees, volunteers and governors will be required to undertake safeguarding training on induction which will be regularly updated in line with statutory guidance.

Please click here to view: [Our Trust policies](#) or [Our recruitment of Ex-Offenders policy](#).





PROUD TO BE  
**Aletheia**  
Academies Trust

# Contact Us

## **Gravesend Grammar School**

Church Walk,  
Gravesend, Kent  
DA12 2PR

## **Unique Reference Number:**

137099

## **Telephone:**

01474 331 893

## **Website:**

[Gravesendgrammar.com](http://Gravesendgrammar.com)

## **Email:**

[HR@aletheiatrust.org.uk](mailto:HR@aletheiatrust.org.uk)