

Tutor groups are vertically mixed groups, within each tutor group there are pupils from Year 12 to Year 14.



Our students follow different pathways depending on their level of need and their future destination.

These pathways are discussed at Person Centred Reviews, typically from Year 9, but often earlier.

Before entering the 6th Form, meetings will also take place with students and their parents/carers to ascertain wishes for the future. which will then inform our planning for each student.

These plans are reviewed regularly and are flexible to respond to changing student needs and plans.

Key features of our typical pathways are detailed below:

- Two pathways
- Discrete lessons in functional Maths, functional English, literacy and reading time, PSHE and RSE
- Discrete time in the timetable for developing independent living skills and preparing for adulthood
- All students understand how to keep safe in the community, at home and online
- Accreditations through ASDAN, the Arts Award and where possible NCFE functional skills in Maths and English
- All students working towards the Duke of Edinburgh Award
- Focus on Cultural Capital and Enrichment through visits into the community
- An emphasis on improving employability skills through careers, enterprise and work experience
- Focus on student's health and wellbeing
- EHCP outcomes woven into the curriculum

Transitions

We are aware that transitions can sometimes be difficult for students to manage and therefore bespoke support is offered when students are moving on after Year 14.



If you require any further information or have any questions regarding the 6th Form Curriculum please contact: Bonnie Tate (Assistant Principal) on: 01795 477788 office@meadowfield.kent.sch.uk
Website: www.meadowfield.kent.sch.uk



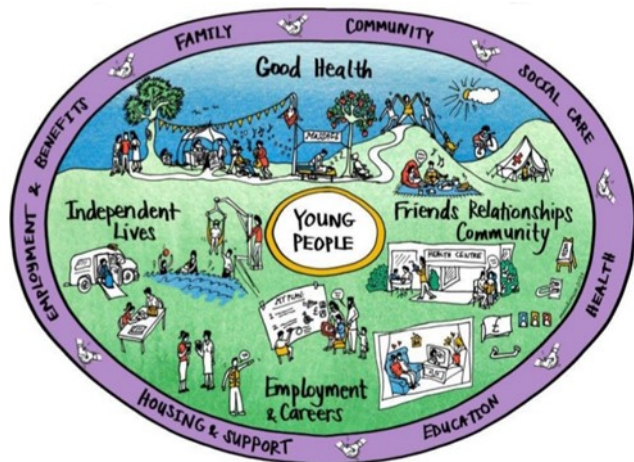
6th Form Curriculum

Preparing for
Adulthood



The 6th Form Curriculum at Meadowfield School prepares our young people for adulthood and is centred around the four Preparing for Adulthood outcomes as detailed below:

- **Good Health**
- **Independent Lives**
- **Friends, Relationships & Community,**
- **Employment & Careers**



The curriculum is personalised, meaningful and appropriate for our students. This is extremely effective in ensuring that our students make good progress both academically and holistically.

To prepare our students for adulthood the 6th Form curriculum is outcome focussed to ensure that all groups of students, regardless of background or ability have the knowledge, skills and accreditations needed for life after Meadowfield School.



We constantly ask ourselves:

- What does the young person need to be able to do in order to live a purposeful; meaningful and fulfilled life?
- What is their realistic future?
- Will they be able to work independently?
- Could they work with support?
- Could they volunteer?
- Or will they have a life, which is more focussed on leisure activities?
- Will they live independently?
- Or will they live in a supported placement?

What do they need to be able to do by the time they leave the 6th Form and beyond? This informs our curriculum and everything that they learn with us at Meadowfield School.

Duke of Edinburgh Award



All students in the sixth form have the opportunity to embark on the Duke of Edinburgh programme. Students rotate through a number of activities each term which include first aid, expedition skills, volunteering, time in the gym, art and music to gain skills to support their acquisition of the award. Students have the opportunity to gain the Bronze award and then move onto the Silver and Gold Award.

Employability and Life Skills

Students are supported to develop their employability and life skills. The 6th Form curriculum aims to support our young people to be as independent as possible and gain relevant employability skills.

Accreditations

All students work towards achieving the following accreditations:

Pathway one

- Arts Award (Arts Award Council)
- ASDAN Supporting personal aspirations, including functional numeracy and functional communication
- Duke of Edinburgh Award

Pathway Two

- ASDAN Personal Development Programme, including modules in functional Maths and English
- NCFE Functional skills in Maths and English if appropriate for the student
- Duke of Edinburgh Award

Careers and Work Experience

All students are supported to understand about different careers and students benefit from Independent Careers Advice from East Kent Business Partnership.

Regular opportunities are in place for students to embark on work experience individually or in small groups.

Examples of work experience placements include McDonalds, ASDA, Faversham Umbrella Centre, Sheppey Community Radio, Premier Inn, Sainsburys, Happy Pants Ranch and Swale Foodbank.