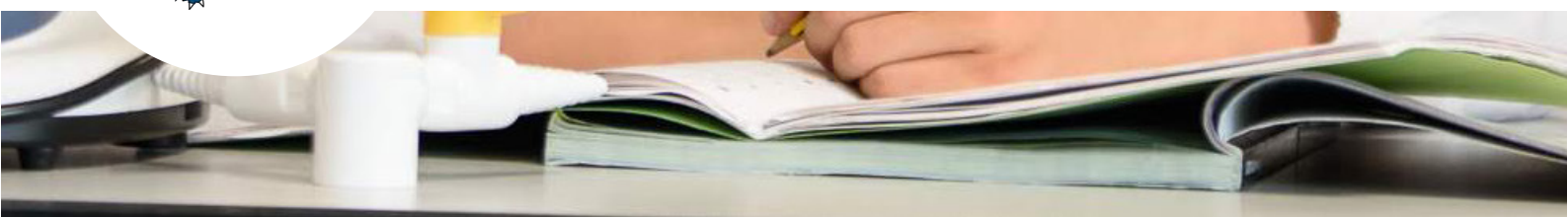




The  
Sittingbourne School

## **Teaching Assistant** INFORMATION





## CONTENTS

The Sittingbourne School	Pg 3
Job Description	Pg 4
Person Specification	Pg 5
Overview of Swale Academies Trust	Pg 6
Application Process	Pg 7
Safeguarding	Pg 8





Dear Applicant,

Thank you for expressing an interest in the advertised Teaching Assistant post. We hope that this pack gives you all the information you need to decide if The Sittingbourne School is the school for you. However, please do not hesitate to contact us to arrange a visit to see for yourself what life at the school is like.

The Sittingbourne School is a large, oversubscribed school built on a strong sense of community, making us a warm and very special place to be part of. Students and staff feel proud to belong to The Sittingbourne School. Our staff work tirelessly to ensure the wellbeing and happiness of every child.

However, we are not a school where we allow ourselves to be defined or limited by the pastoral care we offer. We never forget that teaching and learning is our core business. Our motto is "Empowered through learning" because we believe that through excellent teaching and a fantastic curriculum every child can succeed, be happy and change their lives. We do everything we can to ensure every child consistently receives high quality teaching and learning in every lesson and engages in a challenging and relevant curriculum.

Our drive and ambition for our students was recognised by Ofsted, who in their March 2023 inspection report stated how, "Staff have high aspirations for what all pupils can learn and achieve. This level of ambition is evident throughout the school". They also commented on how, "Pupils are proud of how tolerant and supportive their school is" and that, "The vast majority of pupils behave well in school". The school was graded as "Good" for the third successive inspection.

We have a strong and supportive senior leadership team for whom staff wellbeing is a priority. We appreciate the challenges teachers and support staff face and we do all we can to reduce unnecessary workload and cut down on bureaucracy. We take a zero tolerance approach to rudeness and defiance to staff and we make sure that no member of staff feels alone when things are tough. Staff also benefit from a wide ranging programme of ongoing staff development. The work culture is friendly, professional and supportive, with recruitment and retention another real strength of the school.

In addition, the school also profits from the collaborative support of Swale Academies Trust, whereby close working networks continue to drive improvements to all aspects of school life.

If you think The Sittingbourne School could be the school for you, please email Sarah Scott- Drysdale ([sarah.scottdrysdale@swale.at](mailto:sarah.scottdrysdale@swale.at)) for more information and to arrange a visit.

We look forward to seeing you soon.

Yours Sincerely

Mr Nick Smith  
Headteacher





# JOB DESCRIPTION



**Job Title:** Teaching Assistant  
**Grade:** SAT B  
**Responsible to:** SENDCo

## **Purpose of the Job:**

To work with teachers to support teaching and learning, providing general and specific assistance to pupils and staff under the direction, guidance and direct supervision of the classroom teacher.

## **Main duties and responsibilities (Accountabilities):**

- Work with individuals or small groups of pupils in the classroom under the direct supervision of teaching staff and provide feedback to the teacher.
- Support pupils to understand instructions support independent learning and inclusion of all pupils.
- Support the teacher in behaviour management and keeping pupils on task.
- Support pupils in social and emotional well-being, reporting problems to the teacher as appropriate.
- Prepare and clear up learning environment and resources, including photocopying, filing and the display and presentation of pupils work and contribute to maintaining a safe environment.

## **Teaching Assistants in this role may also undertake some or all of the following:**

- Record basic pupil data.
- Support children's learning through play.
- Assist with break-time supervision including facilitating games and activities.
- Assist with escorting pupils on educational visits.
- Support pupils in using basic ICT.
- Invigilate exams and tests.
- Assist with pupils' personal needs including toileting, hygiene, dressing and eating, as well as help with social, welfare and health matters, reporting problems to the teacher as appropriate. Physically assist pupils in activities (may involve lifting, where mobility is an issue).
- Assist with pupils on therapy or care programmes, designed and supervised by a therapist / teacher.

The duties / responsibilities of this post may vary from time to time according to the changing needs of the Trust services.



# PERSON SPECIFICATION



Criteria		Essential/ Desirable
<b>Qualifications</b>	Level 1 or 2 diploma (or equivalent) in Learning Support	E
	English, Maths and Science GCSE (or equivalent) grade C or above, or significant relevant experience.	E
	Evidence of other TA related qualifications and / or training courses.	D
<b>Experience</b>	Experience of working with children in a similar environment.	E
	Experience in supporting those with specific learning difficulties.	D
	Experience of supporting pupils with medical needs.	D
<b>Skills, Abilities and Knowledge</b>	Proven ability to communicate effectively both orally and in writing.	E
	A willingness to learn.	E
	Understanding of the issues surrounding the safeguarding of children and commitment to child welfare and safety.	E
	Experience in Phonics.	D
	An understanding of the needs of SEND pupils.	D
	Experience of reading and scribing for pupils.	D
	Knowledge of policies and procedures relating to child protection, health, safety, security, equal opportunities and confidentiality.	D
<b>Personal Qualities</b>	Team player.	E
	Initiative.	E
	Commitment to the role.	E
	Positive approach and flexibility.	E
	Commitment to CPD.	E

# OVERVIEW

---

Since its creation in September 2010, Swale Academies Trust has developed into one of the South East's leading Multi-Academy Trusts.

Our purpose is to develop good and outstanding schools and ensure the rapid improvement of schools with challenges.

As the Trust has grown and developed, we continue to ensure that effective school support and leadership is maintained. The Trust's approach to school improvement is based on a combination of CPD, capacity building and collaboration, with a relentless focus on teaching and pupil progress, in order to effect rapid and sustained improvements in outcomes for young people.

The Trust is an organisation which is driven by the belief that all children deserve a good quality education where they are seen as individuals and above all are exceptionally well cared for.

## Swale Academies Trust – Schools

### Primary

- Beaver Green Primary School, Ashford
- Istead Rise Primary School, Istead Rise
- James Dixon Primary School, Bromley
- Langney Primary Academy, Eastbourne
- Parkland Infant School, Eastbourne
- Parkland Junior School, Eastbourne
- Regis Manor Primary School, Sittingbourne
- Shinewater Primary School, Eastbourne
- South Borough Primary School, Maidstone
- Westlands Primary School, Sittingbourne



### Secondary

- Meopham Secondary School, Meopham
- Peacehaven Community School, Peacehaven
- The Eastbourne Academy, Eastbourne
- The Holmesdale School, Snodland
- The North School, Ashford
- The Sittingbourne School, Sittingbourne
- The Turing School, Eastbourne
- The Whitstable School, Whitstable
- Westlands Secondary School, Sittingbourne

### Central Support Services (based at Trust Head Office), Ashdown House, Sittingbourne

- Human Resource Team
- Finance Team
- ICT Team
- Building/Estate Management

## The Application Process

Applications will only be accepted from candidates completing the appropriate application form. All sections of the form which are applicable to you must be completed as clearly and fully as possible.

Please note CVs will not be accepted in place of a completed application form.

Application forms can be found on the Kent-Teach website and all electronic applications should be made via this route. Alternatively, completed forms can be sent by post to the following address:

Miss Sarah Scott-Drysdale  
The Sittingbourne School  
Swanstree Avenue,  
Sittingbourne  
Kent  
ME10 4NL

## The Shortlisting and Interview Process

After the closing date for this post a panel will conduct the shortlisting process. You will be selected for interview based entirely on the contents of your application form, it is therefore important that you fully read the Job Description and Person Specification prior to completing your form.

After the shortlisting process has been completed candidates who have been selected for interview will be informed, and provided with full details of the interview programme. If you have not heard from us within 10 working days of the closing date for this post, you have, on this occasion, unfortunately been unsuccessful.

All candidates who are invited to interview must bring the following original documents:

- Documentary evidence of right to work in the UK
- Visual identification which includes a photograph, usually a passport or driving licence
- Documentary proof of current name and address
- Where appropriate any documentation evidencing change of name
- Certificates of educational or professional qualifications that are necessary or relevant for the post

## Conditional Offer

Any offer of employment will be conditional upon a number of formalities, including, but not restricted to the following:

- Verification of right to work in the UK
- Receipt of two satisfactory references
- Verification of identity checks and qualifications
- Satisfactory enhanced DBS check, as well as additional checks that may be appropriate if you have worked or been resident overseas in the previous five years
- Satisfactory pre-employment health clearance
- A check against the Teacher Service Register for any teaching prohibition or restriction orders where you are applying for a teaching role or if you have previously held a teaching role in past employment.



## Safeguarding

Our Trust has robust safer recruitment procedures to help prevent unsuitable people from working with children.

All individuals working in any capacity at our trust will be subjected to safeguarding checks in line with the statutory guidance keeping Children Safe in Education.

## Retention of information

All information is stored securely and any information supplied by unsuccessful candidates will be destroyed through the confidential waste system after six months from the date of the interview, in accordance with our retention of records procedure.

## Privacy Notice

Please refer to the Trust's Privacy Notice for job applicants for information about how we use any personal data about them we hold.

This can be downloaded here: <https://www.swale.at/page/?title=Privacy+Notice&pid=33>



SWALE ACADEMIES TRUST  
ASHDOWN HOUSE  
JOHNSON ROAD  
SITTINGBOURNE, KENT  
ME10 1JS  
COMPANY NUMBER: 7344732