



Saint George's
Church of England School

WORKING AT SAINT GEORGE'S C OF E SCHOOL

Join our Team



**For Appointment of:
Teaching Assistant**



Diocese of
Rochester



PROUD TO BE
Aletheia
Academies Trust



Saint George's Church of England All Through School



We consider our school to be highly inclusive, welcoming students of all backgrounds and beliefs, unified by our commitment to their well-being and sense of achievement.

Saint George's has developed a reputation as a high achieving school providing excellent outcomes for all students academically and in terms of their personal growth. We have exceptionally high expectations of how our students behave, speak, and present themselves. This is underpinned by our Christian values, our worship and school ethos. Everyone who wishes to learn is welcome.

Our motto '**All Different, All Equal, All Flourishing**' emphasises our Christian belief that the God-given talents of all students should be encouraged and developed, recognising, and valuing their unique worth.

We have had a long-held belief in the potential of an all-through school to further enhance the educational provision on our site. We are delighted that this vision has now become a reality for Saint George's. A shared philosophy ensures that there is greater consistency around expectations, ethos and pedagogy which eliminates any unsettling transition between the primary and secondary phases. We facilitate teachers working together in the primary and secondary phases which raises aspirations still further and ensures that children are not able to fall through the gaps. Our primary pupils benefit from having specialist subject staff available and economies of scale allow greater spending on teaching and learning and the sharing of specialist and enhanced facilities for all pupils.

At Saint George's, we strive for all students to have learnt new skills, to have developed their talents and with this, a love of learning; making them confident, articulate, sensitive and caring citizens for the future.



CEO's Welcome Stephen Carey

Thank you for your interest in the role at Saint George's C of E All Through School. I hope that the information within gives you an insight into our school, Aletheia Academies Trust and the unique opportunity this position offers.

Aletheia Academies Trust's vision is rooted in a determination to **improve the life chances of local children**. Aletheia has grown with devotion to a principle of geographical proximity; knowing, caring for, and understanding the areas we operate in are important to us. Since our inception, the Trust has adopted an operational model based upon the notion of a family of schools; understanding that like any family member, each school, and each community that it serves, is unique. Schools are encouraged to celebrate and explore this dimension. The role of the Trust is to act in a parental capacity; to ensure that each school is well-supported and individual strengths are shared to improve the outcomes of all; to provide wider experiences to Trust pupils beyond the capabilities of any individual school; to develop and share staff expertise; to provide expert leadership and governance.

Saint George's was one of the founding schools within Aletheia Academies Trust and continues to play a significant part in the development of the organisation. As the only current open provision with a secondary phase, the school has a pivotal role in the co-construction of an all-age learning journey for pupils. The school has excellent staff retention rates and is deservedly proud of the palpable sense of community that stakeholders and visitors encounter and regularly comment upon. The school provides an exemplary model of the highly ethical and inclusive Trust vision and values.

It is these values and principles that make me feel so proud and privileged to serve as the CEO of the Aletheia Academies Trust.

I look forward to receiving your application.



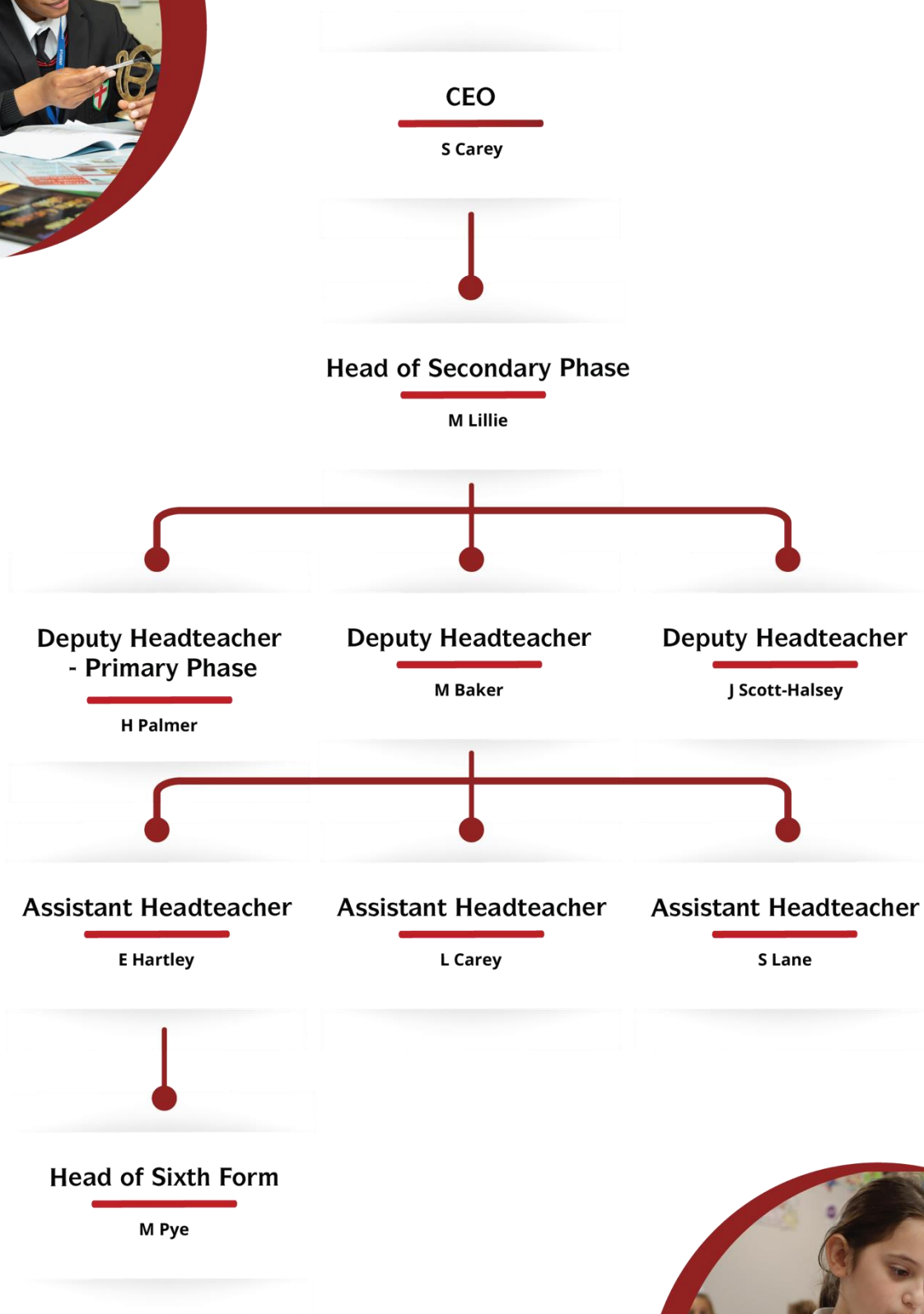
All Different • All Equal • All Flourishing



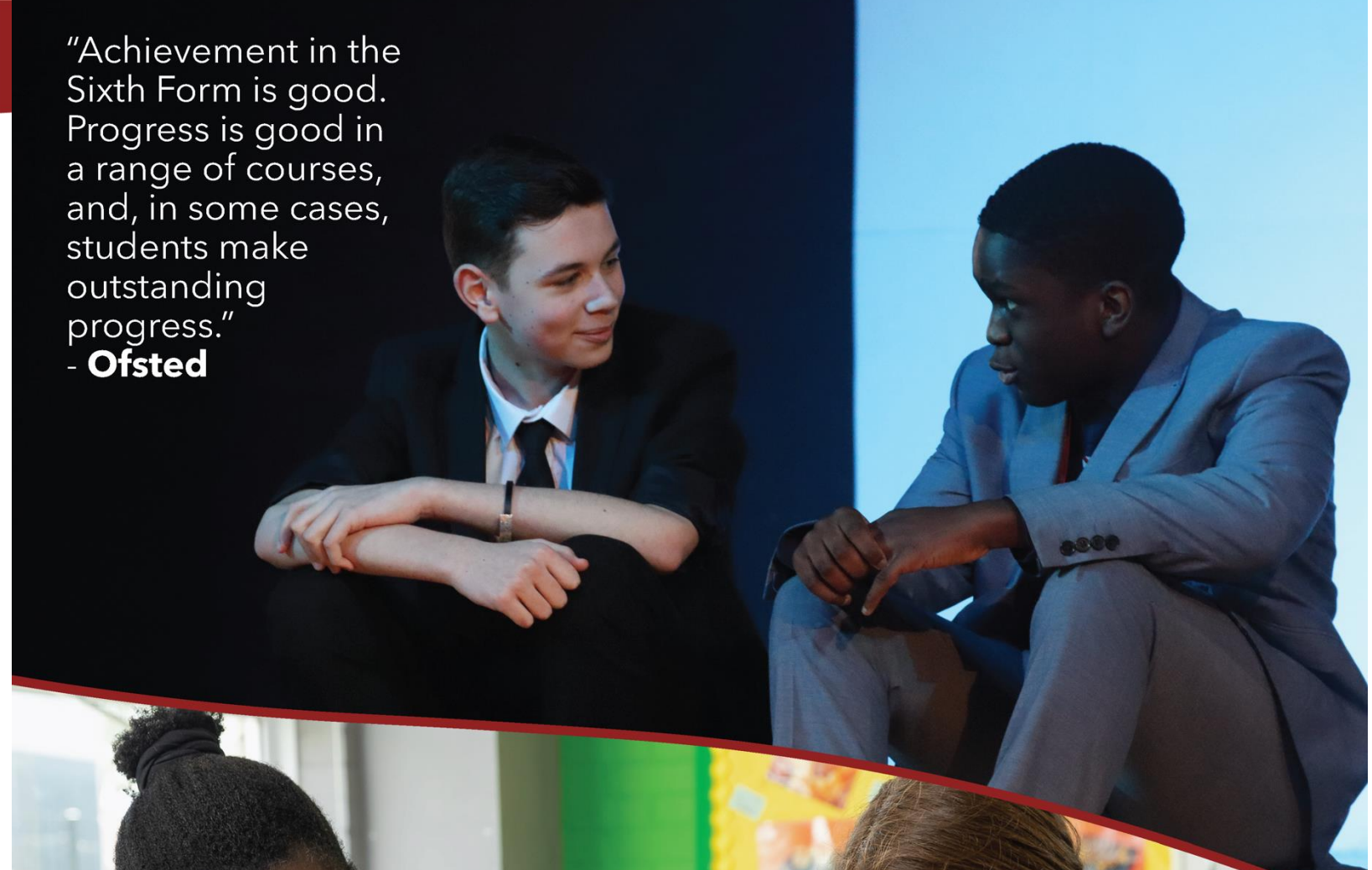
Visitors most often comment upon the profound sense of community within the school.



School Structure



"Achievement in the Sixth Form is good. Progress is good in a range of courses, and, in some cases, students make outstanding progress."
- **Ofsted**



Job Description

Job Title	Teaching Assistant
Location	Gravesend, Kent
Duration	Permanent
Work Hours	30 hours, 39 weeks per year
Reporting to	SENCO
Salary	KR3 £14,981.69 (£21,293 FTE)
Pension	LGPS



About the Role

Job Purpose:
To support pupils within a specific department or across departments, ensuring access to the curriculum. To support the class teacher.

Key Duties and Responsibilities

- Participate in the planning of a range of activities for a small group of pupils.
- To assist in preparation and adaptation of teaching materials, equipment etc. which facilitates pupils’ access to the curriculum.
- To assist in the preparation of the classroom, the reception of pupils, the organisation of materials and the checking and clearing of equipment.
- To assist teaching staff in delivering their lessons to identified students ensuring progress is made.
- To assist in meeting the students’ needs for encouragement and reassurance.
- To attend to the students’ personal requirements and physical care on a daily basis and encourage independence at all times.
- To implement procedures for the monitoring, assessment and recording of the pupils’ progress.
- To contribute where appropriate to any multi-disciplinary discussions of the pupils’ needs/progress, to contribute to informal reviews and annual reviews.
- Provide support for pupils outside of the classroom to enable them to fully participate in activities.
- Work with other professionals from outside of the school.
- Support students with emotional or behavioural problems & help develop their social skills.
- Support and implement specific programmes of study within small groups of targeted pupils.
- To undertake additional responsibilities within the department.

Person Specification



Qualifications and Experience

GCSE or equivalent level, including at least a Grade C in English and maths
Experience working directly with pupils and parents
Experience working collaboratively with colleagues
Experience working in a school environment

E	D
X	
	X
	X
	X

Skills and Knowledge

Strong interpersonal communications
Professional attitude to colleagues, students, parents and the working environment
Flexible and willing to help with various activities
Able to work without close supervision and enjoy working on own initiative
Able to work effectively with other colleagues
Good listening skills

X
X
X
X
X
X

Personal Qualities

Work as part of a team, sharing working knowledge and skills.
Work flexibility, able to rearrange work plans in relating to changing priorities.
Interact sensitively with other workers, children and parents.
Listen to understand the needs of all children.
You will need to be patient, firm but fair and have a calm approach. Good communication skills at all levels in order to build relationships with children, parents and members of school staff.
To show an interest in the ethos, mission and values of the Trust and demonstrate this in all work activities.

All Essential Criteria



St George's C of E School - Secondary Phase.

Required to start September 2023

An exciting opportunity has arisen for a candidate of exceptional ability to join our Learning Support Team in this over-subscribed and successful high school.

The school has an existing reputation for high quality education with a relentless focus upon high expectations and aspirations.

We are a friendly, dynamic and innovative school and pride ourselves on our commitment to ensuring student progress through high quality teaching and learning provision for all. The successful applicant will share these values and play an active part in delivering on this commitment.

We would love to hear from you if you:

- ♥ Want to work in a supportive and caring environment
- ♥ Are committed to enabling every student to achieve the very best they can
- ♥ Are an ambitious professional
- ♥ Are a good/outstanding classroom practitioner



If you are interested in this position and would like to have a more detailed conversation or arrange a visit to the school before making the decision to apply for the post, please contact:

HR@aletheiatrust.org.uk
01474 533 082

To apply for this role, please complete our [Online application form](#)

Closing Date:

29th June 2023

Interview Date(s):

TBC



Aletheia Academies Trust is committed to safeguarding and promoting the welfare of children and expects all staff and volunteers to share this commitment. All offers of employment are subject to an Enhanced DBS check, and where applicable, a prohibition from teaching check will be completed for all applicants.

This post is exempt from the Rehabilitation of Offenders Act 1974 (Exceptions) Order 1975 (2013 and 2020). This means that certain convictions and cautions are considered 'protected' and do not need to be disclosed to employers, and if they are disclosed, employers cannot take them into account. Guidance about whether a conviction or caution should be disclosed can be found on the Ministry of Justice website:

<https://www.gov.uk/government/publications/new-guidance-on-the-rehabilitation-of-offenders-act-1974>



Contact Us

Saint George's C of E School

Meadow Road,
Gravesend, DA11
7LS

Telephone:

01474 533 082

Website:

saintgeorgescope.kent.sch.uk

Email: HR@aletheiaacademies.org.uk