



Barton Manor
School

Aspire, Believe, Achieve

Information Pack



Contents

1. Welcome from Executive Headteacher
2. Our School
3. Application process
4. BCAT Omnigraph
5. BMS Senior Leadership Team Omnigraph

Dear Applicant

Welcome to the application process for the positions available at Barton Manor School (BMS). I am immensely proud to be the Executive Headteacher/CEO of all the schools within Barton Court Academy Trust and the current Headteacher of our Free School, Barton Manor School. Each school serves a diverse community and offers a unique career opportunity. At Barton Manor I am particularly proud of the efforts and energy my colleagues make every day to provide the quality education that pupils deserve. The dedication and determination exhibited by our staff across the Trust humbles me daily and our collaboration in pursuit of excellence in our work is exciting. We are a small Trust, but as we have grown our ambition of what we can achieve has grown with us.

Barton Manor School opened in September 2022 to 150 Year 7 students. The school will grow each year with a new entry of 150 Year 7 students annually each September. The school is extremely popular with 125 students currently on the waiting list. In year 7, of 150 students, there are 7 EHCP students (4.6%) compared to 2.3% nationally and 20 students (13%) who require SEN support compared to National Average of 10.8%. There are 66 students (44%) who are designated as Pupil Premium compared to National Average of 28% and 58 students (39%) are entitled to Free School Meals (FSM), above Kent average of 14.1% and National Average of 12.4%. There are 60 students (40%) from minority ethnic groups compared to National Average of 32% with 28 students (19%) with first language not believed to be English compared to 16.9% nationally.

The school is sited on the former Chaucer Technology School site and is 5 minute walk to Barton Court Grammar School. The School, over time, will be an 11-18 years, co-educational, non-selective school with 5 forms of entry. It is planned as a centre of excellence for vocational subjects at KS4 and KS5 along with a joint Sixth Form provision with Barton Court Grammar School offering academic qualifications at Post-16.

The School's brand new amazing state-of-the art design build is impressive and we believe this outstanding design, combined with an innovative curriculum, excellent teaching and learning, and strong pastoral care and guidance, will provide outstanding education for the local community for generations to come.

We seek to appoint new staff who will champion our pupils, many of whom face challenges and, without the support of a caring but determined school, could have limited life chances. All staff roles are important and we seek staff who are dedicated and passionate but also warm, possessing charisma and who recognise that high expectations, high standards, team work and diligence are essential.

We are a small Trust, but as we have grown our ambition of what we can achieve has also grown. Barton Court Grammar School is an excellent co-educational 11-18 years school and continues to provide support for BMS with many Senior Leaders, Middle Leaders and teachers leading and teaching at both schools. There is a significant number of staff who work across both schools ensuring that BMS has high quality, specialist staff from the outset. Joint pastoral, curriculum, senior leadership meetings and joint training and development to share best practice are embedded.

The Charles Dickens School (CDS) is an 11-16 years non-selective co-educational school in Thanet, which was originally in special measures but since joining BCAT in 2017 has been on a rapid improvement journey, our last Ofsted in June 2019, taking us out of special measures as a school with "Requires Improvement" with Good" Leadership and Management. The School is due its next Ofsted inspection imminently and we are confident we will achieve a "good" rating with "outstanding" for leadership and management. CDS also supports BMS with its SEN provision, senior leadership and with training and development.

Being part of a small Trust which works closely together, provides further leadership and professional

development opportunities and greater scope to share best practice to improve the life chances of all pupils. I am particularly proud of the efforts and energy my colleagues make every day to provide the highest quality of education that pupils deserve. The dedication and determination exhibited by our staff across the Trust humbles me daily and our collaboration in pursuit of excellence in our work is exciting.

Please read our website (www.bartonmanor.org), visit us and consider whether the School appeals. If invited to interview you will find we are open and transparent so that you have a thorough insight into what constitutes being a member of staff at Barton Manor. It is a dynamic school and it is a place for enthusiasts who believe that all things are possible. The Secondary phase is a new beginning for pupils and a place where professions can thrive.

We are committed to building people's careers at BCAT and establishing sustainable opportunities for staff development. We will ensure the successful candidate has an effective and bespoke induction process and will receive full support from myself, Head of School, Senior leaders and colleagues.

If any matters regarding the application are unclear please contact us via email kcardus@bartoncourt.org or by telephone on 01227 464600.

Please submit your application at your earliest convenience; we look at all applications as they arrive and reserve the right to progress them at any stage.

I hope that the quality of your application leads to an interview and thus gives us the opportunity to share our School with you.

Best wishes

A handwritten signature in blue ink that reads "K Cardus". The signature is written in a cursive, flowing style.

Kirstin Cardus
Executive Headteacher BCAT
Headteacher BMS

Our School – *Aspire, Believe, Achieve*

Students will **aspire** to be their very best and will be supported to **believe** in themselves and their ability to **achieve** and excel. Students will develop into confident, independent and resilient learners ready to meet the challenges of a world that is rapidly changing.

Our students will acquire, not only an excellent foundation of learning, but also the acquisition of habits of flexible thinking and learning, resilience and confidence in solving problems both as individuals and within a team. Students will enjoy some of the very best teaching resources and facilities available in the local area and, with the support of Barton Court Academy Trust, the School will be a special place to be educated.

At BMS, we promote the values of serving others, humility, achievement, respect and equality. We are a school which embraces our British heritage and British values. As a result, we welcome staff from a range of backgrounds and faiths to join our vibrant and inclusive environment.

We are seeking to appoint a senior leader to the post of Assistant Headteacher: SENCo, Pupil Premium, EAL, Gifted & Talented and whole school enrichment. The focus of responsibility for the post will be the strategic development of the SEN provision at the school, along with the provision for Pupil Premium, EAL, Gifted & Talented students and further development of our whole school enrichment programme. The successful candidate will have the potential and desire to be active and influential across the whole leadership spectrum. As such it will provide a first rate preparation for those considering going on to Deputy Headship.

The leadership team consists of a highly experienced team of senior leaders who also work within BCGS and CDS senior leadership and we share best practice across the Trust. Over time the leadership team at BMS will gradually expand as the School grows.

Subjects across the School benefit from having a team of highly competent and charismatic middle leaders from both BCGS as well as within BMS. Exciting and innovative teaching is enabled by the scaffolding of colleagues' skills through comprehensive continuous professional development which encompasses everything from bespoke workshops to the opportunity to observe colleagues, including our leadership team.

Entirely committed to vocational/technical education, our facilities are second to none and include our own sports hall, MUGA and dance studio, Drama studio and main hall linked to music and music technology for school productions and performing arts events. Vocational/technical areas which include Hospitality & Catering, Design Technology and Engineering, Hair and Beauty, as well as ICT rich classrooms for vocational courses such as Business, ICT, media, travel and tourism and Health and Social Care and Child Development.

Colleagues and pupils benefit from our commitment to extra-curricular activities, Enrichment Days and Enrichment Week broadening student experiences and developing cultural capital with provision shared with BCGS where possible. Successful teachers within the Trust are committed, industrious and open to development, not only within the confines of the classroom, but within wider school/trust life.

Candidates applying for our Assistant Headteacher post are required to evidence in their personal statements their experience and that they match the person specification.

OUR VISION:

Aspire, Believe, Achieve

OUR MISSION STATEMENT:

Barton Manor School will provide a state-of-the-art learning environment combining an innovative academic and technical curriculum with strong pastoral care and guidance, which will deliver an outstanding educational offer for the local community for generations to come. Our fundamental moral purpose as educators is to nurture children and young people to think for themselves and therefore learn skills and develop their knowledge so that they are fulfilled and can thrive in an ever-changing world. As a member of BCAT, Barton Manor School will strive to become an accredited Thinking School where cognitive education is at the heart of all that we do.

Barton Manor School: Values

To achieve Barton Manor School's vision we have established a set of behaviours and characteristics that define how everyone within our community pledges to act; these are the values that we strive to demonstrate and personify on a daily basis.

Resilient / risk takers
Empathetic
Supportive of others
Principled
Empowered
Courageous
Thoughtful thinkers

The success of Barton Court Academy Trust is due to a strong partnership between staff, students and parents and a clear understanding of our core values within each school. Our vision is to lead three 'outstanding' secondary schools within the Trust, with high standards and excellence, underpinning all aspects of school life for both students and staff.

The Barton Manor School ethos will encourage traditional values such as hard work, integrity and respect, along with tolerance, diversity and inclusion to develop personal character and aspiration.

We will value and nurture our young people to understand the importance of hard work, strong moral principles, open mindedness, and care for others whilst embracing the modern technological world today.

The School will be forward-thinking and entrepreneurial. This can inspire our students today; everyone can work hard and be their very best. We want our students to have rich experiences that make them aspire for the very best careers and access to Higher Education and Training.

Curriculum Intention

Our curriculum intention is to prepare students for further education and/or employment with a combination of an academic and vocational curriculum which suits the needs of our students. This is done whilst giving the students some autonomy over their studies, allowing them ownership for their learning.

We aim to create well-rounded individuals who appreciate right from wrong and understand British values and what these mean in modern-day Britain. Through our focus on PSHE (Personal, Social, Health Education) they will be happy, healthy and safe, whilst learning how to be considerate of others and the environment, enabling them to become good citizens via SMSC (Social, Moral, Spiritual, Cultural). Students will leave Barton Manor School with a clear vision of, and prepared for, their chosen future. They will be equipped with the qualifications, knowledge, skills and morals needed to succeed.

Curriculum Overview

We will offer a broad and balanced curriculum, which is both challenging and stimulating. All pupils in Years 7 and 8 will follow the National Curriculum and in Years 9 to 11 they will have the opportunity to study a range of GCSE, Vocational, BTEC, Technical and Creative subjects. The curriculum will be designed as far as practically possible to meet the needs of all learners.

In Years 9 – 11 our curriculum will offer personalised pathways to successful and future opportunities in training, Further Education and ultimately in achieving fulfilling careers.

For any pupil who has additional and/or special educational needs we will have an outstanding team to support them. We will ensure that no child is left behind and all make exceptional progress. Equally, we will ensure any pupil who exhibits exceptional talents will be nurtured to excel.

Student Voice and the House events will be developed as a student leadership structure ensuring that students feel listened to, valued and able to contribute to their school.

Application Process

- Closing date for applications are published on our website

Please complete the application form and provide a supporting statement (on no more than two sides of A4). The supporting statement should include how you meet the person specification and your skills and experience to date that make you an ideal candidate for this post.

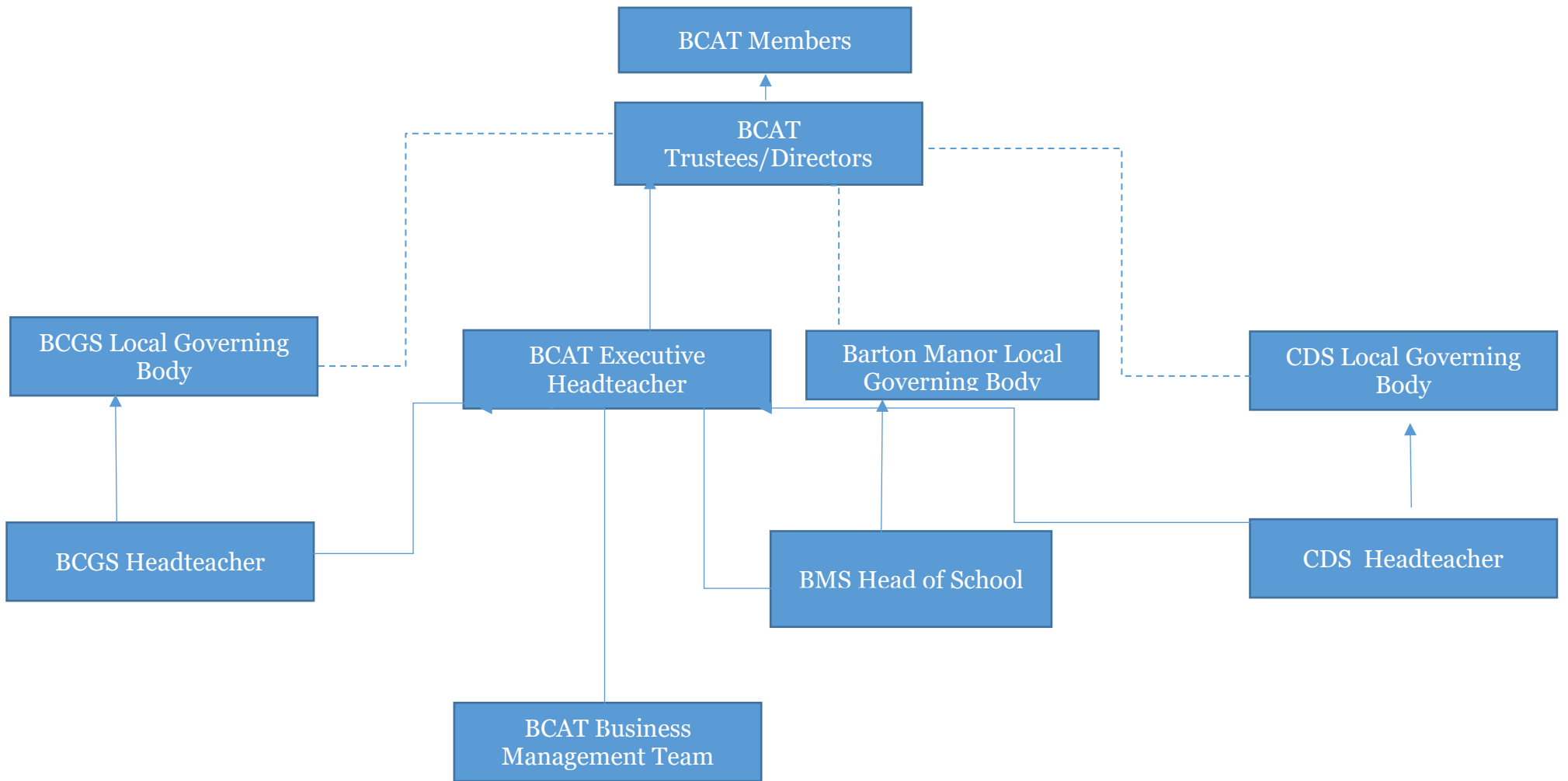
If you wish to discuss this post please contact Ms Kirstin Cardus, Executive Headteacher/CEO and Headteacher of Barton Manor School, kcardus@bartoncourt.org

Please email your application to:

Mrs Roberta Light
PA to the Executive Headteacher & Headteacher
c/o Barton Court Grammar School
Longport
Canterbury
CT1 1PH

right@bartoncourt.org

Barton Court Academy Trust (BCAT) Omnigraph



Kirstin Cardus, Executive Headteacher

Trust: Strategic leadership, Operational leadership, Finance, Personnel, ICT strategy, Site

**New Post
Head of School**

Richard Morgan

Trust Senior Deputy Headteacher
Safeguarding
Personal Development
Behaviour & Attitudes
Attendance,
Pupil Premium

Caro Benard

Trust Senior Deputy Headteacher
Quality of Education:
Implementation
METAL,
CPD

Owen Mitchell

BCGS & BMS Senior Assistant Headteacher
Quality of Education:
Intent & Impact; ARR;
Timetable
Exams, School calendar

Holly Stanley

Assistant Headteacher (Ks3)
Safeguarding
Personal Development
Behaviour & Attitudes
Attendance
PSHEE, Pupil Premium
CEIAG

Dan Long

Trust SENCO
SEN provision

Mitch Halpin

Trust Deputy SENCo
Whole School Enrichment

**New Post
Assistant Headteacher:
SENCo**

SEN Provision
Pupil Premium
EAL Provision
Gifted & Talented
Whole School Enrichment