





“

There is so much opportunity here for students to pursue their aspirations and ambitions. Nothing is impossible

”

Jeanette Hamilton,
Careers Advisor



“

Thank you for all your help and support and for making me believe in myself

”

Sarah Gibbons,
Year 11 student, 2013

Welcome

Looking for a new school can be a time of apprehension due to the unknown. You may make a shortlist and research each establishment. It is a long term commitment that is vitally important for the happiness of your child. It will be when you come through our door that you actually experience the vibrant atmosphere and know you are in a great educational establishment.

On your tour of our school, you will experience the positive learning environment, witness the strong relationships between teachers and students and see our state of the art facilities. Holmesdale Technology College, which we fondly refer to as Holmesdale, is a trust school and technology college which brings a wealth of opportunity to enrich students' learning. We offer the full range of GCSEs and work hard to ensure that all our students are well placed to realise their aspirations. Our primary aim is to unlock potential and transform lives through exceptional education.

At Holmesdale, we model traditional values and expect our students to show respect for staff and other students. Uniform standards are high, encouraging students to take pride in themselves. We ensure all our students develop their individual skills, abilities and interests through hard work and lots of fun in a positive climate for learning and developing.

“

Right from the beginning in Year 7 through to the sixth form, the rehearsals and performance of the summer show and then these fantastic exam results on top of all that, the whole experience at Holmesdale has just been amazing

”

David Omotayo,
Year 13 student, 2013



“

The 'Hogwarts' science day has been fantastic. Our pupils have done so many things and learned so much. It's a day they will remember for a long, long time! They can't wait to come to Holmesdale to study biology!

”

Year 4 Primary School Teacher

“

The school has helped me make friends. I completely feel part of a team, part of the furniture. Coming to Holmesdale was absolutely the best decision I have ever made

”

Matthew Absolon,
Year 7 student, 2012

Learning to learn

Our students are encouraged to Believe in themselves, as we do in them, Aspire and Succeed in what they do, whether through excellent GCSE and A level results, personal challenges as well as in their wider learning experiences. They learn best as active participators who enjoy challenge and emotional involvement in their learning; modify their behaviour to learn well; have a sense of ownership and responsibility and exhibit qualities of emotional intelligence such as; persistence, self-awareness, optimism and self-management.

Our pedagogy is founded on developing findings in cognitive sciences: we believe that intelligence can be learnt and that there are a variety of ways in which a student can be clever. We provide our students with

the toolkit to access learning effectively. We are now enhancing this toolkit by becoming a thinking school.

Our teachers are facilitators, enablers, coaches and experts in their fields. They are passionate about their subjects, agree on what effective learning is, innovate, maintain student-centred classrooms, encourage active and discovery-based learning and promote “deep learning”. Our teachers are recognised as leaders of learning. They all share their good practice and are reflective.

Our classroom climate is one of nurture, reward and support but also challenge and strong discipline, to encourage all students to achieve their very best.



Being a Technology College

“
We have been pleased with the school in ensuring good progress... particularly with a variety of subject areas encouraging research and evaluation techniques

”
Parent of a Year 8 student, 2013



For Holmesdale and our community, this is our flagship for being forward looking. Information Technology is a strength across the school and now the school is focused on the heart of what is an area of national shortage: Science, Technology, Engineering and Mathematics. (STEM)

All of these subjects are highly valued by employers as academically challenging areas and are held in high regard. They open doors for the future. We offer them all at A level and they have grown in popularity.

STEM subjects develop higher level thinking skills and equip our students for successful onward routes in life.

“

The school cares for and supports students well in their personal development and provides them with effective academic and personal guidance

”

Ofsted, 2011



Making the most of talent



As our students move through their school years, it is striking to see raw talent being identified and nurtured. We also recognise that children and young adults may excel in different disciplines at different stages of their school life.

We encourage our students to express themselves through subjects such as Drama, Media, Art, Photography and Poetry. Being creative also has supported students to excel in Food, Textiles and

Design Technology or even simply work backstage as a much valued technician in the school production. Physical Education is of vital importance to the overall wellbeing of each child. Some, however, have natural enthusiasm, channelled through clubs and wider opportunities for competition.

Pursuing an enthusiasm offers great satisfaction in itself. By pushing for the highest standards our students can find this translates to other areas of school life.

Developing the whole person

We believe that education should be a broad experience and one which is not confined to the classroom. Students may for example work with a business link, take up a language exchange, complete the Duke of Edinburgh's Award or engage in a community project. Many further opportunities come also through the enrichment days each term, such as an extended learning project at Epping Forest or competing in the Jaguar Car National Challenge Final. Through these opportunities our students can begin to reflect on their environment and appreciate the world around them.

“

Teachers help students to reflect thoughtfully about their progress. As a result, students are able to recognise what they need to do to achieve their ambitious personal targets

”

Ofsted 2011



Leadership is valued

Leadership is recognised within our community to be a particular strength among our students. They have, for example, excelled in co-ordinating and seeing through well run fund raising events to support local and national charities, taught primary students to swim and supported in numerous primary schools as leaders of their chosen subject such as Sport, French, Spanish or English.



“

My daughter has done brilliantly in her exams. We have always been happy with the school and she has always done well here. I am delighted with her GCSE results

”

Parent of a Year 11 student, 2013



Moving forward

Our ethos is one of honesty, kindness, courage and diligence; our moral code. Through this environment we help our students to be self-assured, articulate and polite.

Our teachers and support staff are committed to the needs of all of our students. Our tutors are exceptional in their duty of care.

Our students have a sense of belonging. They enjoy the teamwork and competition brought about by the house system.

Partnerships with parents are built upon clear communication and mutual respect.

“

In the 6th form, the last two years at Holmesdale will be two years that I will never forget for all the right reasons. I am extremely thankful to the school and its teachers for giving me the best opportunities I could have possibly asked for

”

Laura Clark,
School Ambassador, 2013

“

I have been looking forward to joining our sixth form for years and I am really excited about the opportunities that lie ahead

”

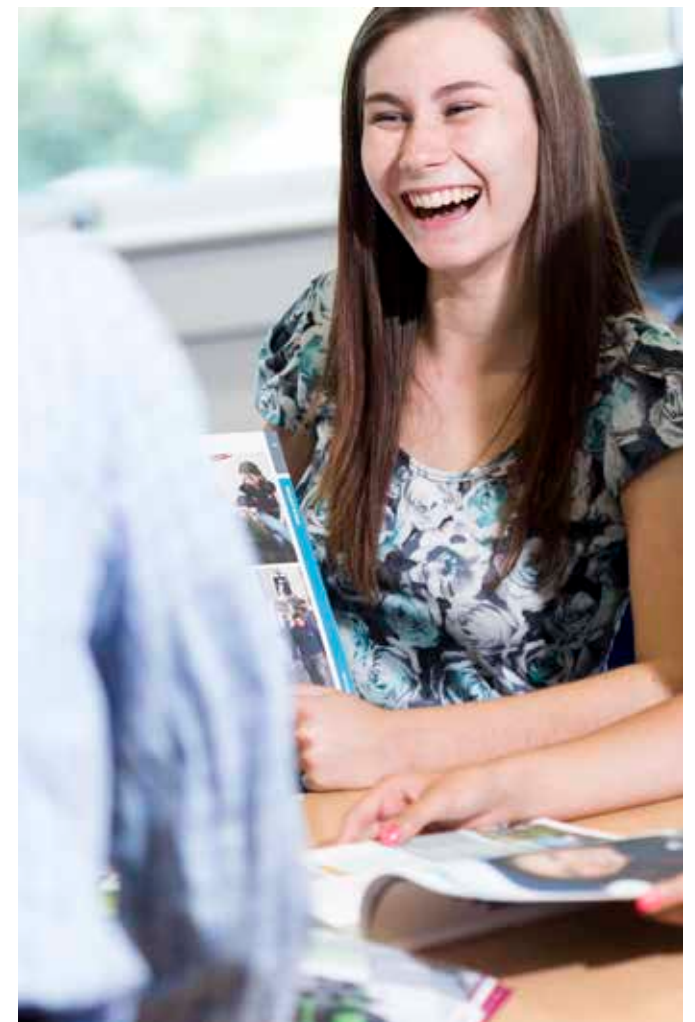
Nathan Dennis,
Year 12 students, 2013



Moving up

Expectations are high in the Sixth Form

Our students take the step into young adulthood with a strong sense of purpose and collegiality. They have their own social and work areas. They undertake wider research and also engage in roles of social and personal responsibility.



Moving on

Our Sixth Formers visit Oxford University as part of the induction process at Holmesdale. This fires their aspirations for university. We have a strong link with all four Kent universities who provide advice and guidance for individuals. Our trust partners are also supportive of the growing number of apprenticeship routes we have developed.

“

I did well at GCSE at Holmesdale and went on to work hard and achieve even better grades than I expected at A level. This means that I can now move on to my next qualification, a degree in the arts, with confidence

”

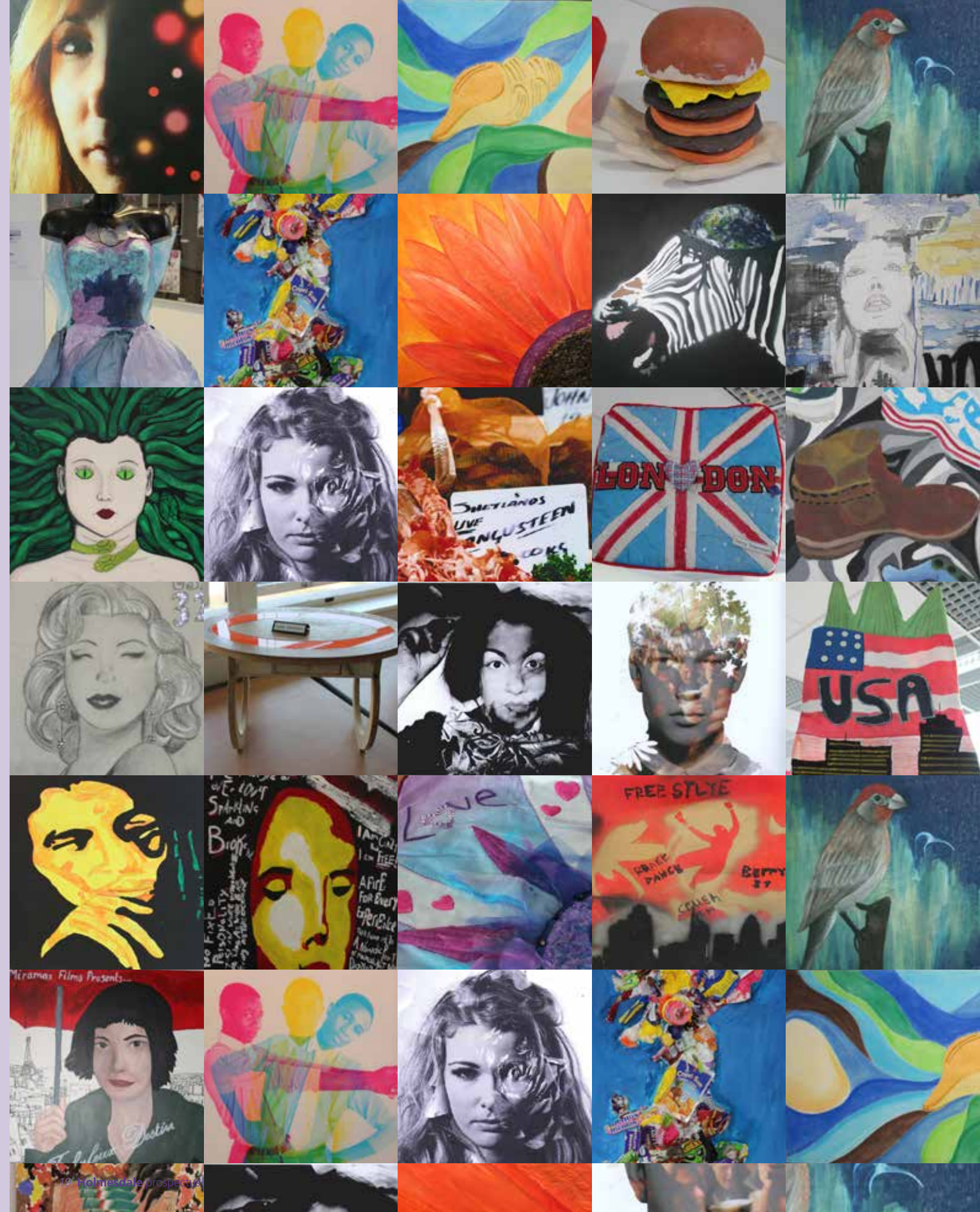
Katy Millgate,
Head Girl, 2013

Staying connected

Many of our students come back to visit us. Holmesdale Alumni is a popular way to stay in touch. Just over the last year 256 alumni have signed up to our network from 14 different year groups (2013 -1972).



Former Holmesdale student and sixth former, Paul Pierce, now a graduate of the Italia Conti Academy of Theatre Arts returned to address the school at an awards evening.



Homesdale Technology College

Malling Road
Snodland
Kent
ME6 5HS

Telephone: 01634 240416

Fax: 01634 244041

E-mail: office@holmesdale.kent.sch.uk

Website: www.holmesdale.kent.sch.uk

School Principal - Mrs Julia Campbell

